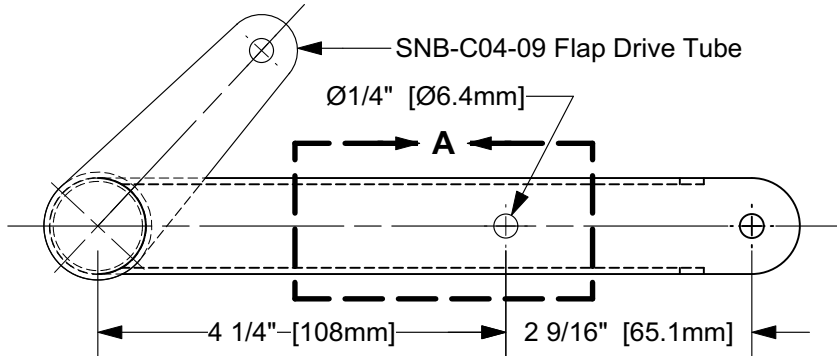


The information disclosed herein is the property of the originator who reserves all patent, design, proprietary, manufacturing, use and sales rights thereto, except for the rights expressly granted to others. This document shall not be reproduced nor shall the information contained within be used by or disclosed to others except as expressly authorized by the originator. ©

Revision Letter	Change Discription

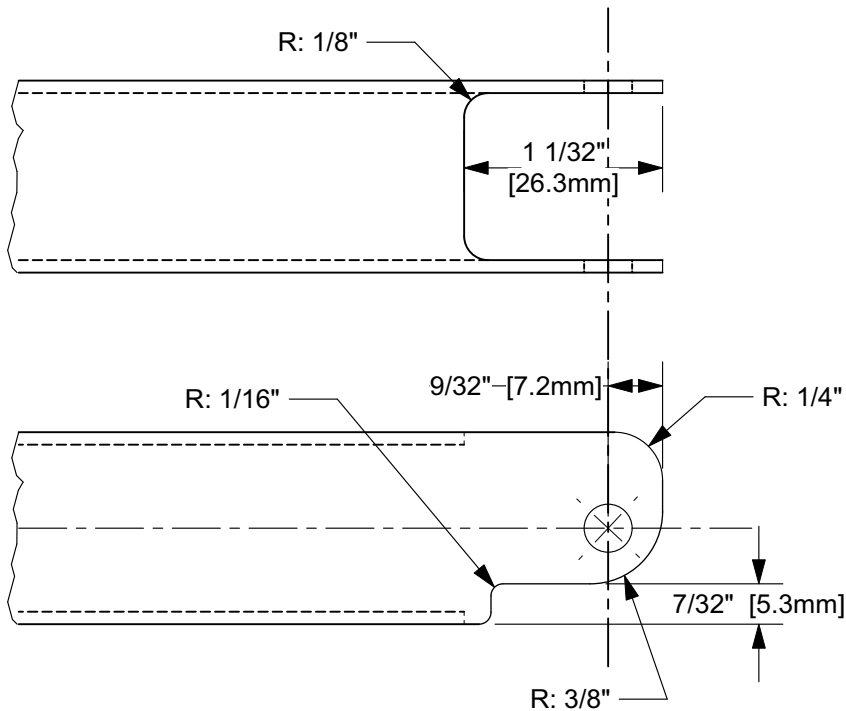
Step 1: Drill new 1/4" Dia. Actuator Bolt Hole
Scale 1:2



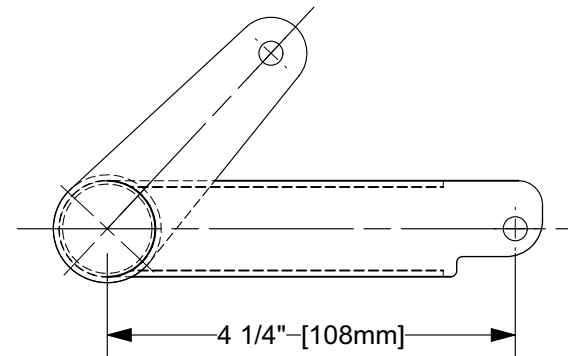
This drawing is intended for the field conversion of SNB-C04-09 Flap Drive Tubes to SNB-C04-11 Flap Drive Tube specifications, for use with SNB-C05-11 actuators.

Flap Drive Tube's actuator attach arm is to be cut-down in length for the shorter stroke, higher force output SNB-C05-11 actuator.

DETAIL A - Step 2: Trim Arm to Length and Shape to Clear Actuator Body
Full Size Pattern



Completed SNB-C04-11 Flap Drive Tube
Scale 1:2



Sonex, LLC
B-Model Flap Drive Tube Field Mod
for SNB-C05-11 Flap Actuator

Drawing Scale	Drawing Number	Revision
FULL & Noted	SNB-C04-11_CONVERT	NC