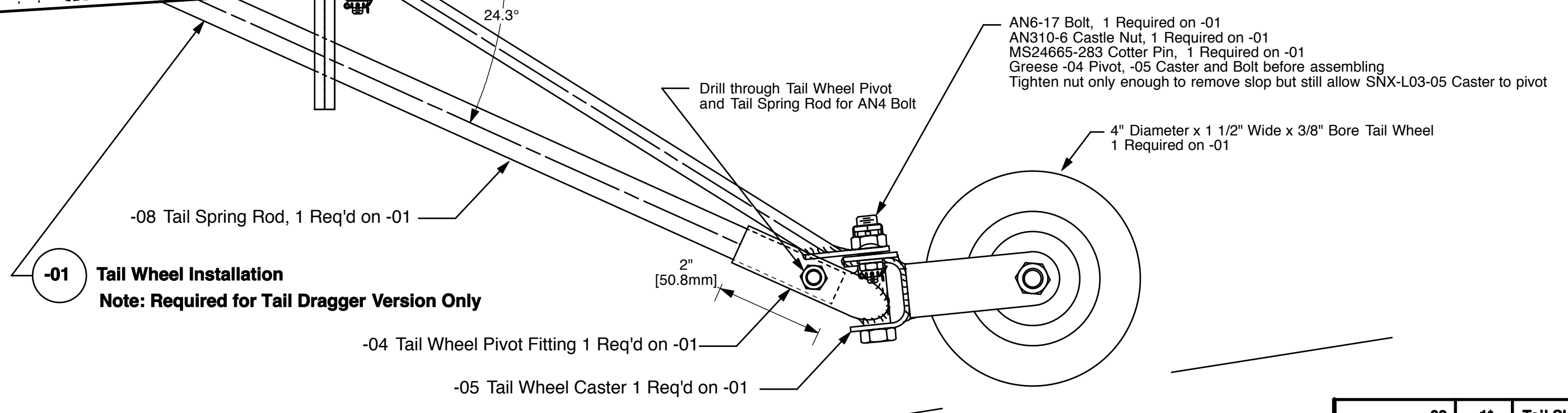
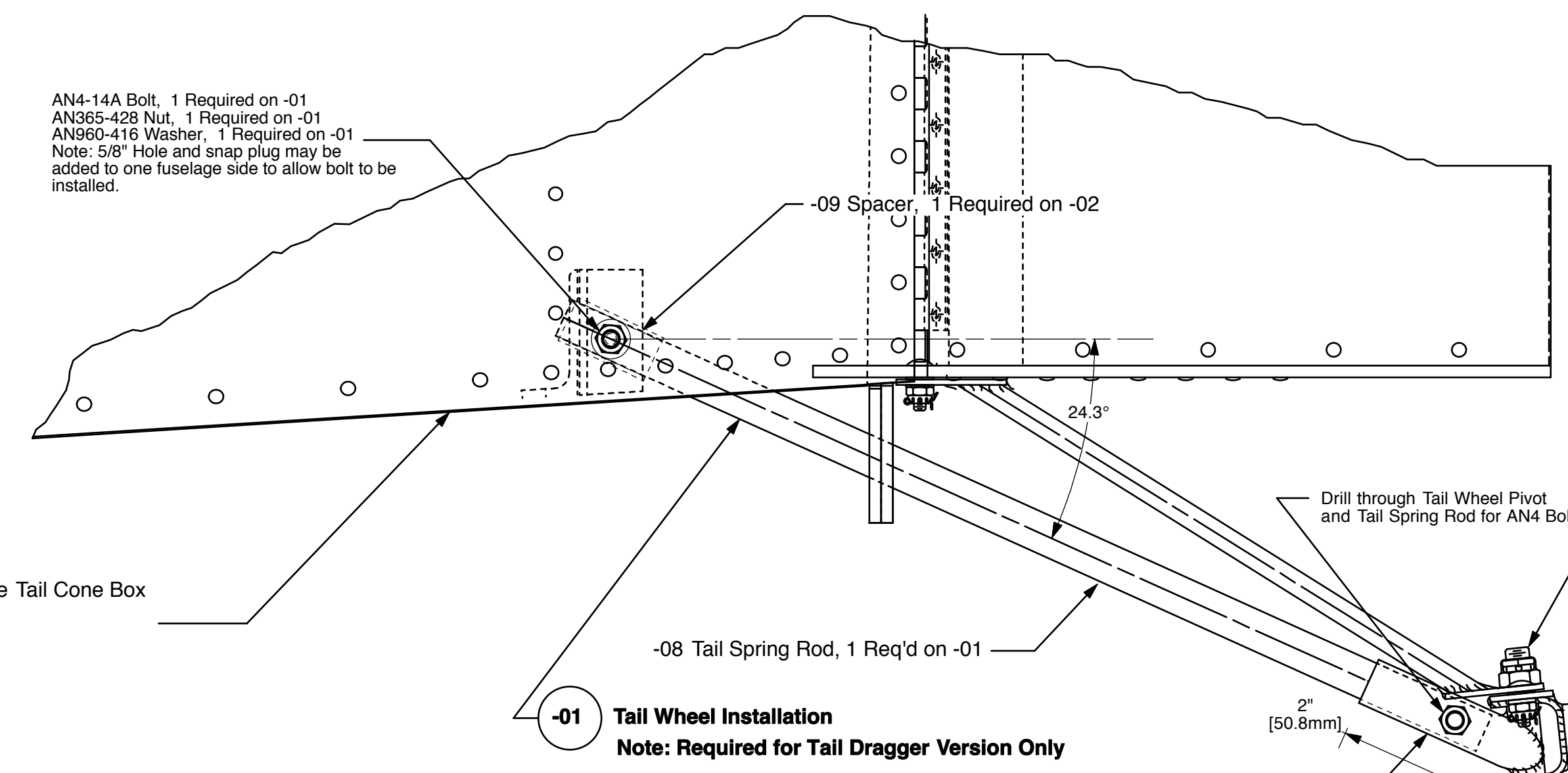
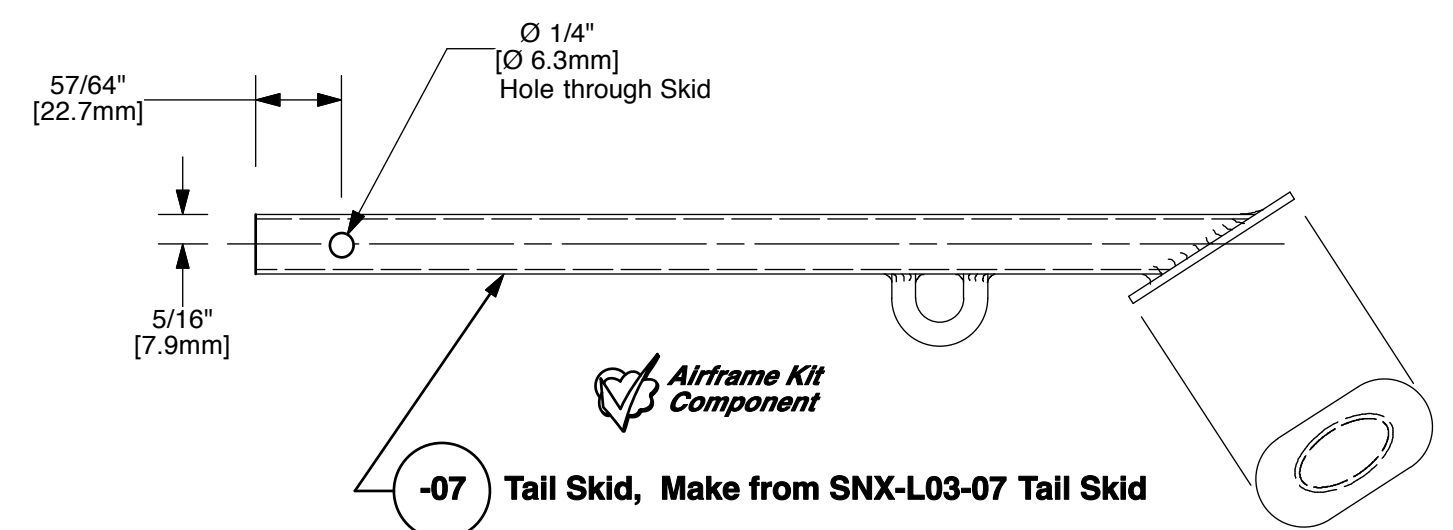
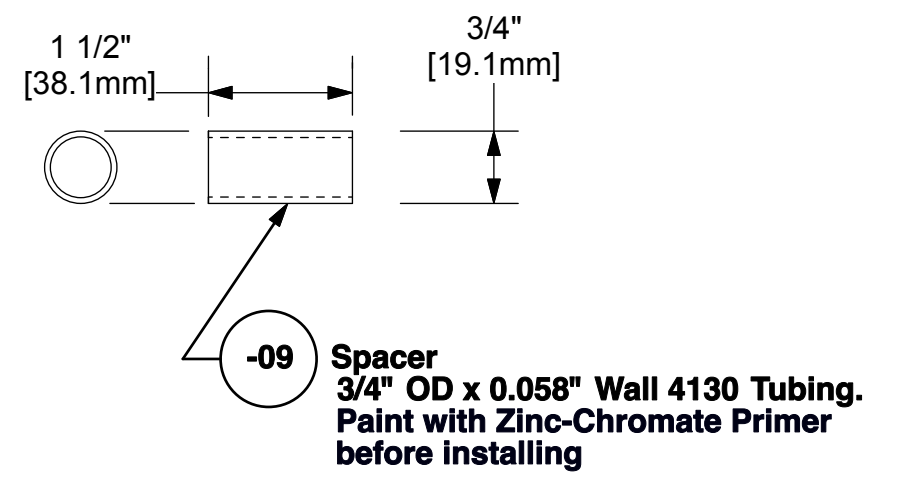
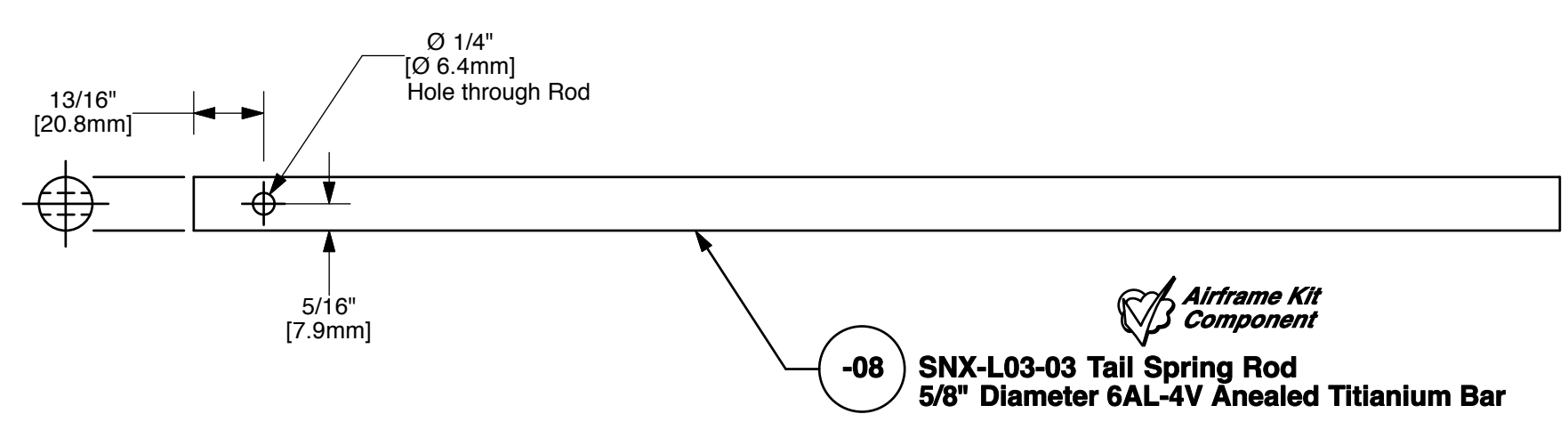
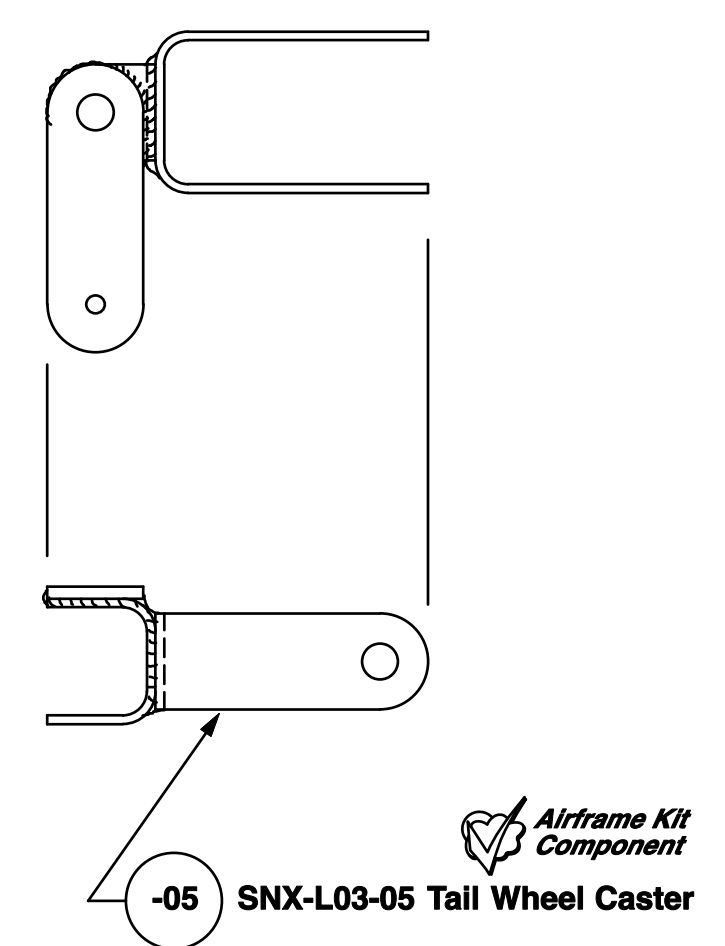
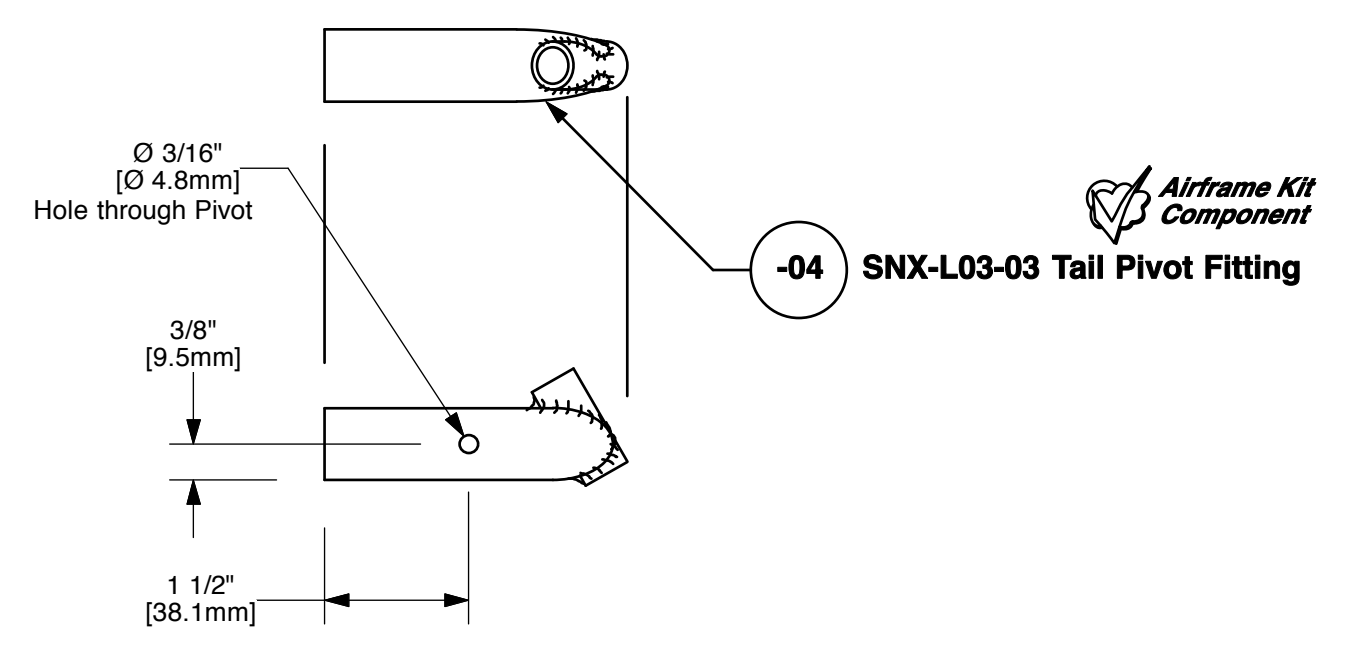
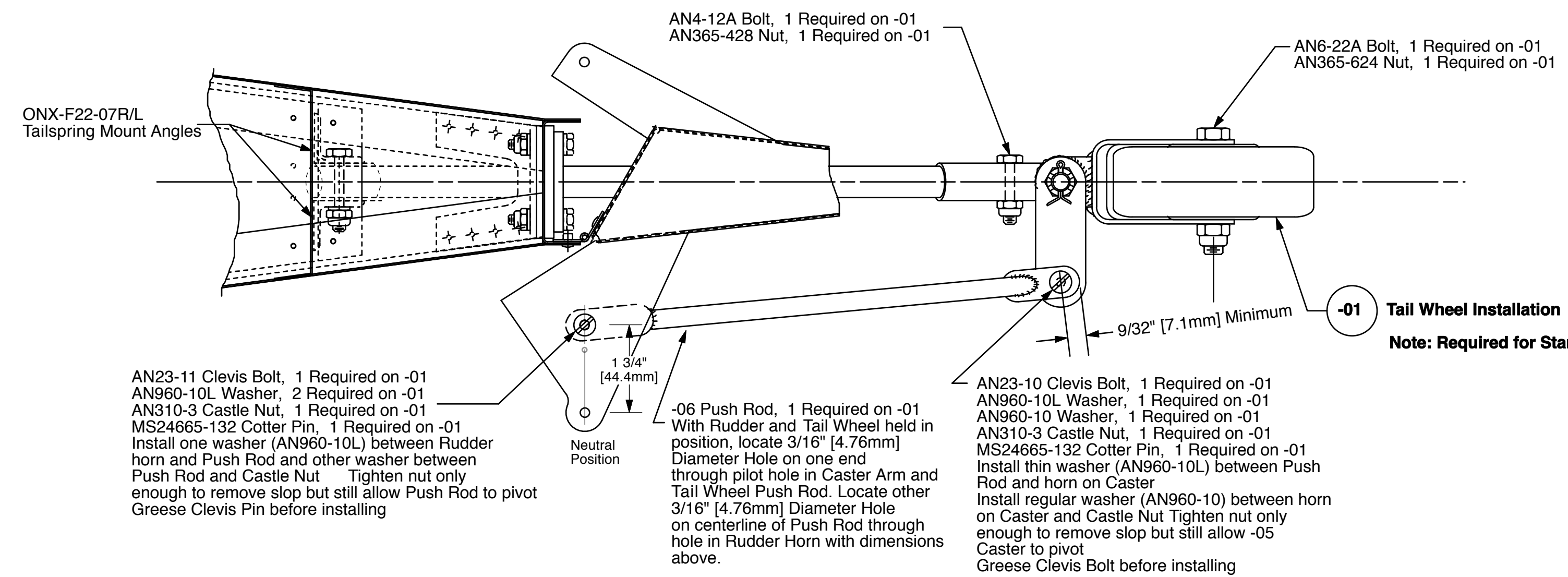
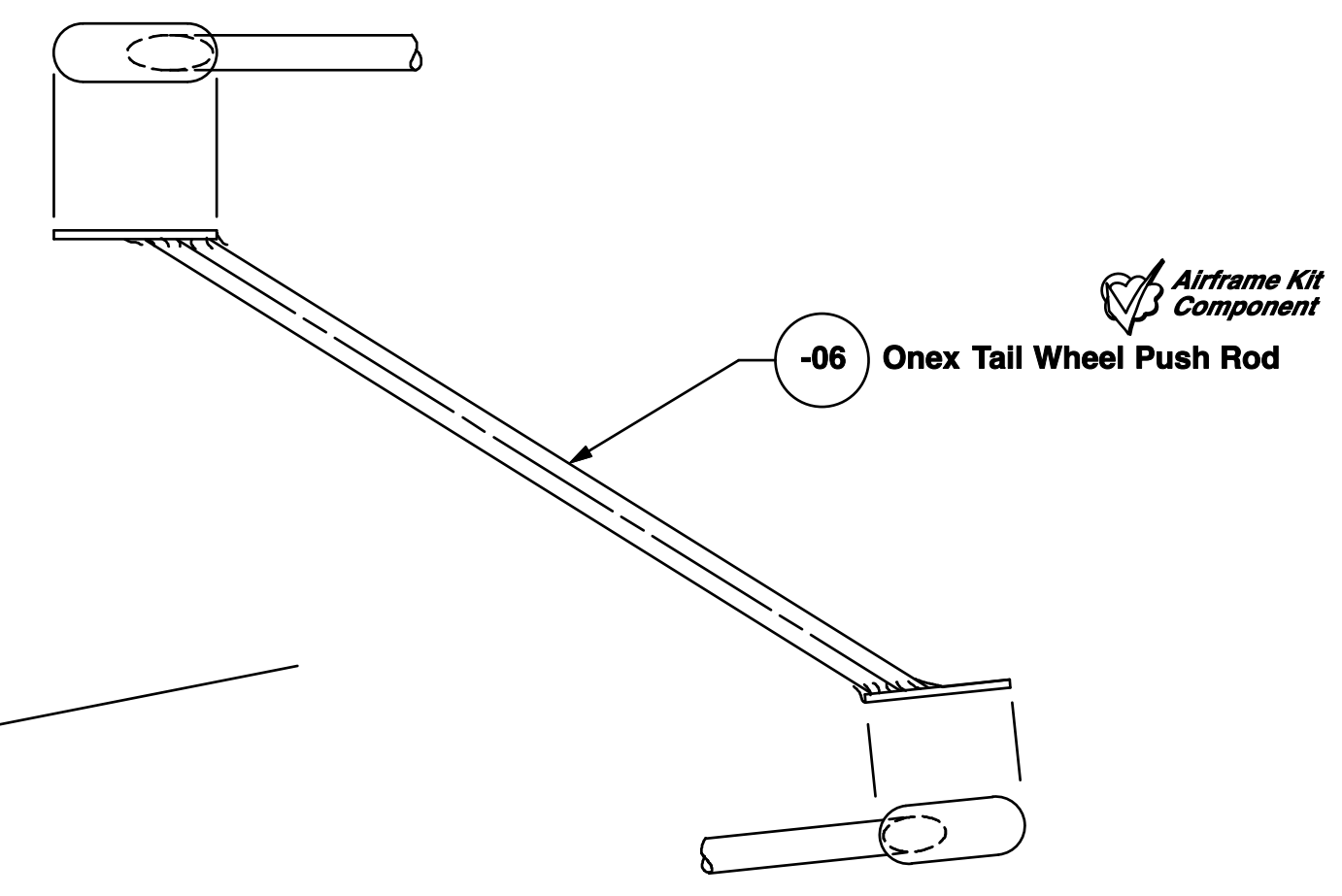
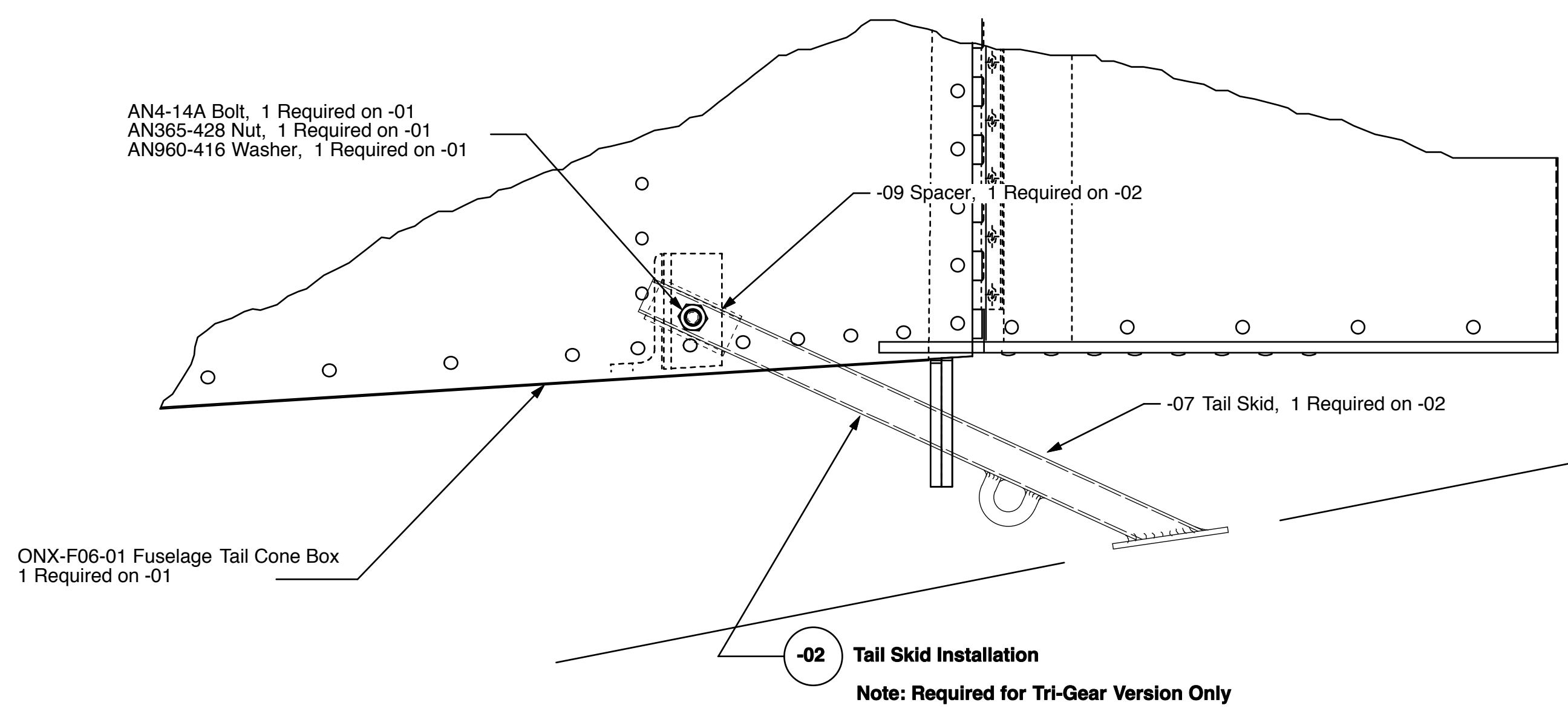


The information disclosed herein is the property of the originator who reserves all patent, design, proprietary, manufacturing, use and sales rights thereto, except for the rights expressly granted to others. This document shall not be reproduced nor shall the information contained within be used by or disclosed to others except as expressly authorized by the originator.

Revision Letter	Change Description
A	Added new Detail -09, 3/4" OD x 0.058" Wall 4130 Tubing to use as a spacer between tail spring or tail skid and F22-07R and -07L. 3.2.12



- Installation Procedure for -01 Tail Wheel Installation:
- 1.) Drill Vertical Tail Post at 24.3 degrees through pilot holes in Tail Post and aligned with Tailspring mount angle holes up to 5/8" Diameter. (Note: this was drilled with a hand drill on the prototype aircraft. The tighter the fit between the tailspring/tailskid and Tail Post, the better)
  - 2.) Install -08 Tail Spring Rod in Fuselage Mount and secure with 1/4" Bolt & Nut
  - 3.) Locate SNX-L03-04 Tail Wheel Pivot Fitting on -04 Tail Spring Rod and drill 1/4" [6.4mm] hole through -04 Tail Spring Rod. Note: Make sure pivot axis is vertical so that Tail Wheel will be square to ground
  - 4.) Secure -04 Tail Wheel Pivot Fitting onto -04 Tail Spring Rod with 1/4" Bolt and Nut
  - 5.) Assemble -05 Caster onto -04 Tail Wheel Pivot Fitting
  - 6.) Insert Tailwheel and mark and drill axle hole in -05 caster. Make sure tail wheel is square on ground.
  - 7.) With Rudder and Tail Wheel held in neutral position, locate and drill -06 Push Rod for clevis bolt holes
  - 8.) Assemble -06 Push Rod onto Aircraft with Clevis Bolts, Washers, Castle Nuts and Cotter Pins

Dash / Part Number	Qty Req'd	Part Title	Next Assembly
-02	1*	Tail Skid Installation	ONX-F03
-01	1*	Tail Wheel Installation	ONX-F03

<b>onex</b>		
<b>Tail Wheel / Tail Skid Details &amp; Installation</b>		
Drawing Scale	Drawing Number	Revision
1/2	ONX-L03	A