

ITEM NO.	PART NUMBER	DESCRIPTION	QTY.	Both Assy (QTY)
1	JSX-L01-63	Machined Hex Nut	1	2
2	JSX-L01-64	Locking Arm Washer	1	2
3	JSX-L01-65	Roll Pin	2	4
4	JSX-L01-66	Grooved Dowel Pin	1	2
5	AN394-35	Clevis Pin	1	2
6	JSX-L01-62L	L.H. Lock Arm (shown)	1	1
7	JSX-L01-62R	R.H. Lock Arm (opposite)	1	1
8	JSX-L01-54	Nylon Washer	5	10
9	AN4-14	Bolt	1	2
10	AN4-22	Bolt	1	2
11	AN4-24	Bolt	1	2
12	AN4-12	Bolt	1	2
13	AN310-4	Castle Nut	4	8
16	AN380-2-2	Cotter Pin	5	10
20	AN960-416	Washer	3	6
21	AN960-416L	Washer	3	6
22	AN960-616L	Washer	1	2
24	JSX-L01-37	SAE 863 Bronze Sleeve Bearing	1	2
28	JSX-L01-51	Nylon Washer	5	10
29	JSX-L01-52	Nylon Washer	1	2
31	JSX-L02-43	Jam Nut	1	2
36	M-JSX-L01-19	Upper Actuator Pivot Bushing	1	2
37	M-JSX-L01-20	Lower Actuator Pivot Block	1	2
38	AN365-624A	Selflocking Nut	1	2
42	M-JSX-L03-14	Actuator Attachment Block	1	1
43	M-JSX-L01-18	M-L-G Leg Lock Link	1	2
44	M-JSX-L01-17	Main Gear Lock Frame	1	2
45		5" Actuator Assembly	1	2
46	JSX-L01-67	Shim .020" thick	4	8

Notes:

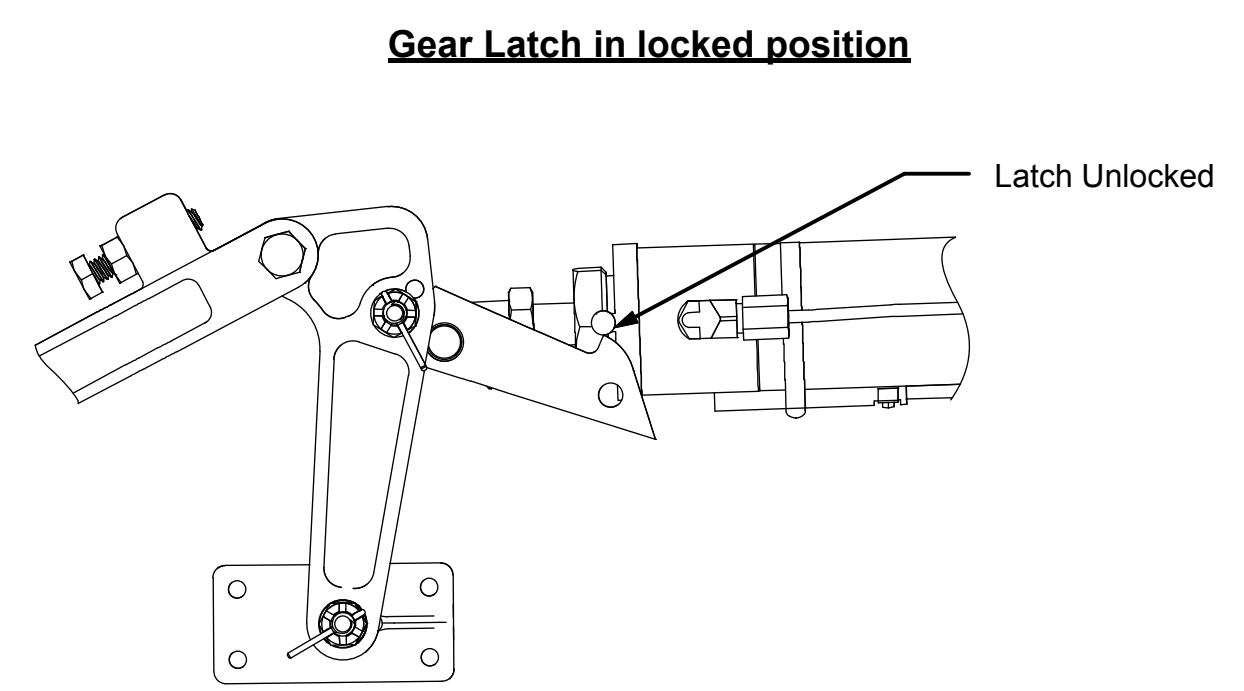
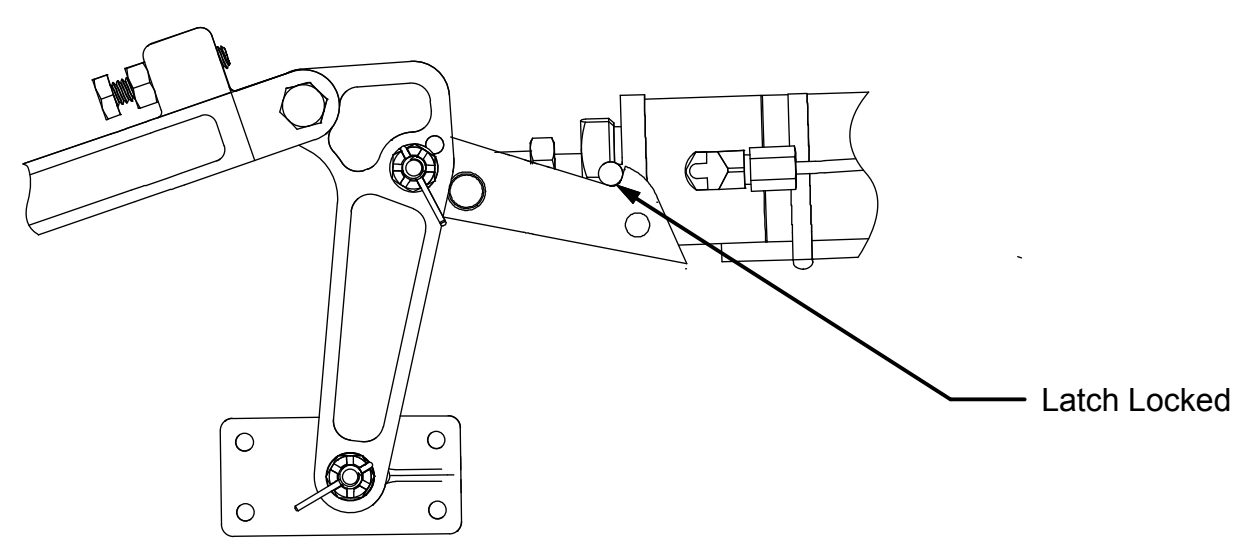
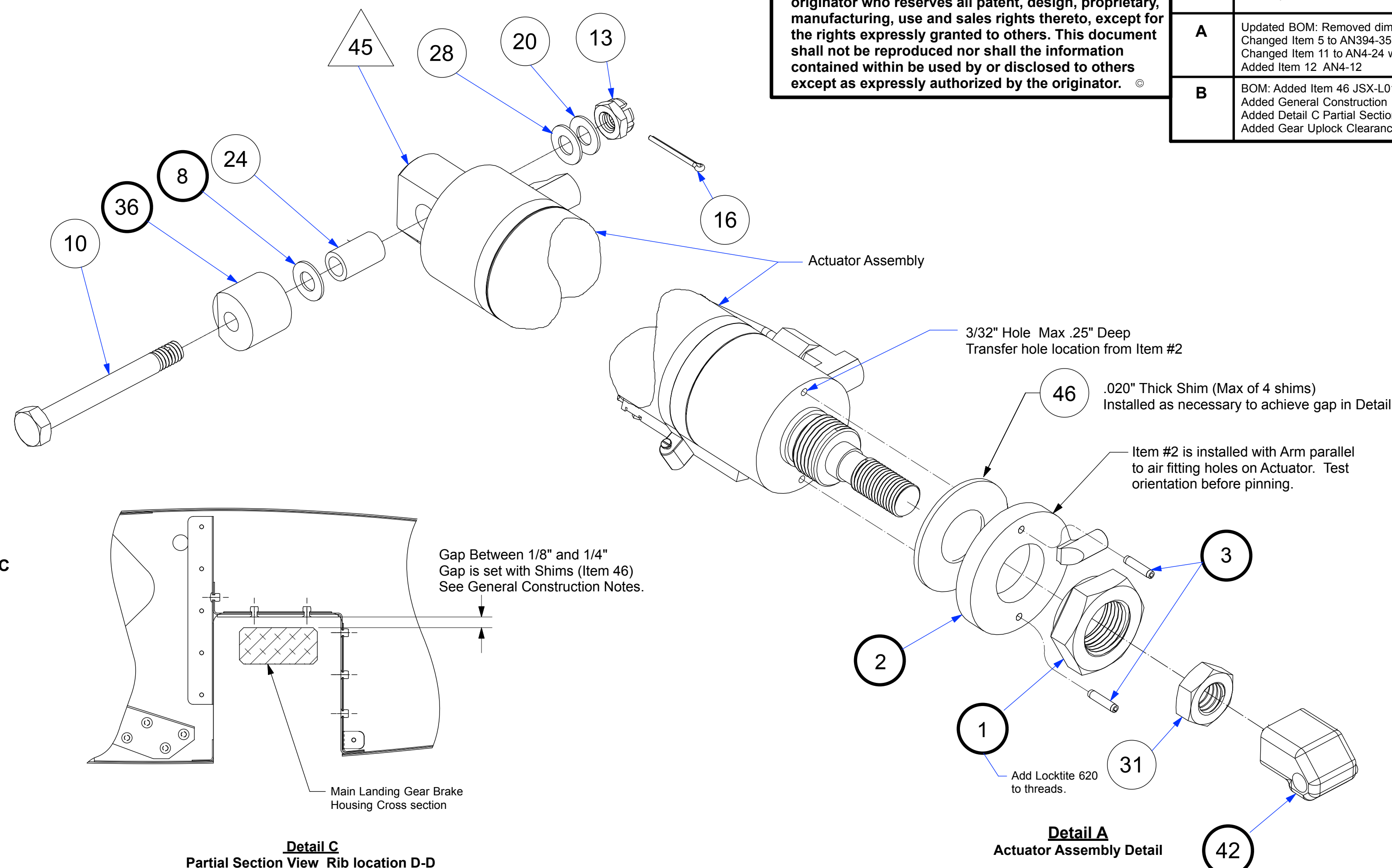
- Item #45 Requires holes to be drilled. See: Detail A
- Items with (○) have already been provided or are consumables such as cotter pins.
- Items with (○) are new parts for upgrade.
- Items with (△) are assemblies from another drawing.
- Items 42 and 44 are universal for LH and RH assemblies.
- They are shown in Left Hand configuration, RH is opposite.
- Apply Lockite 620 to the threads of item 1.

General Construction Notes:

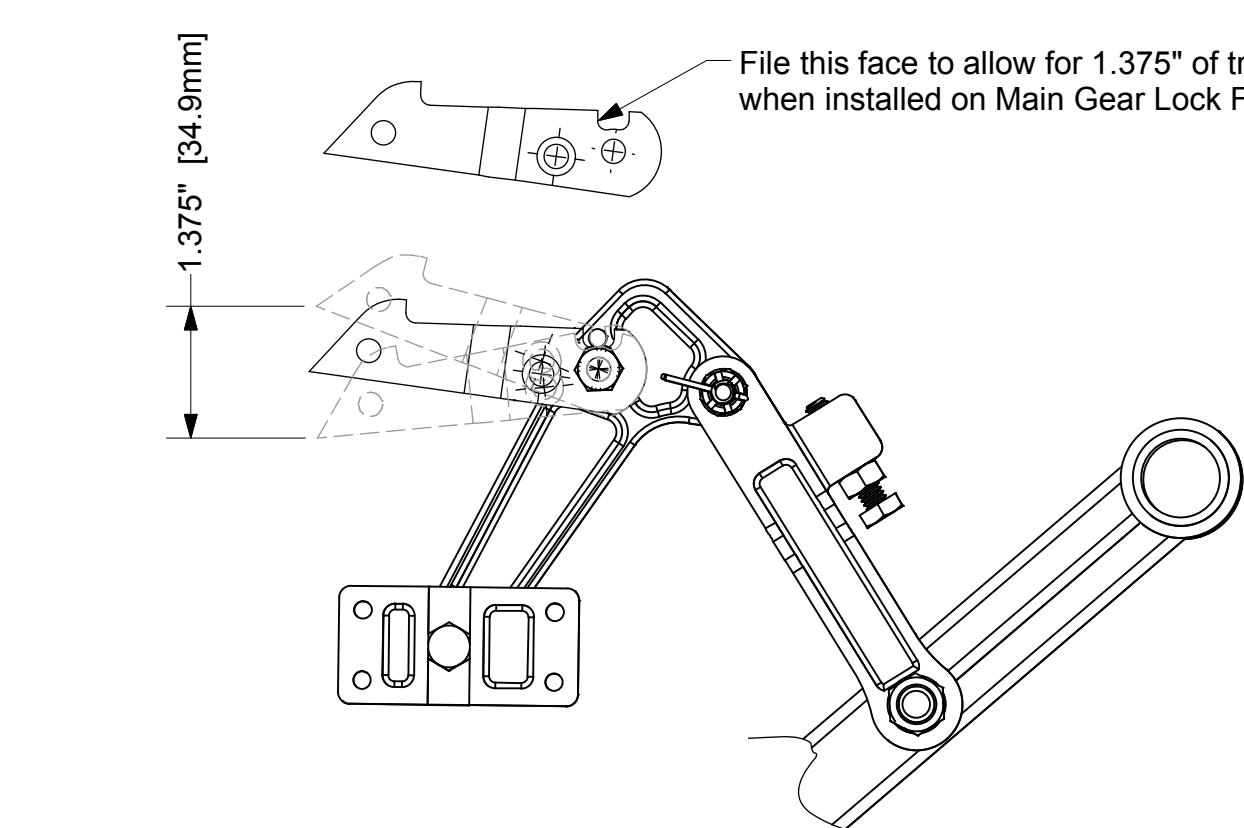
- 1) Remove gear linkage assembly from area shown in **Detail D** if installed. (This view does not reflect previous gear versions.)
- 2) Disassemble gear linkage.
- 3) Install Item 4 on to 44. Pin should be flush aft side of assembly
- 4) Install Item 6 onto 44 with hardware. See: **Detail B**
- 5) File lock arm for proper travel. See: **Gear Up Lock Clearance Detail**
- 6) Assemble Pivot and Cam Lock Assembly. See: **Detail B**
- 7) Install onto aircraft. (Linkage and Actuator can be assembled before installing on aircraft.)
- 8) Cycle gear to check proper installation.
- 9) Check for proper gap between brake housing and Delrin bumper. See: **Detail C**
- 10) Add Item 46 in area indicated in **Detail A** to achieve gap shown in **Detail C**.

The information disclosed herein is the property of the originator who reserves all patent, design, proprietary, manufacturing, use and sales rights thereto, except for the rights expressly granted to others. This document shall not be reproduced nor shall the information contained within be used by or disclosed to others except as expressly authorized by the originator.

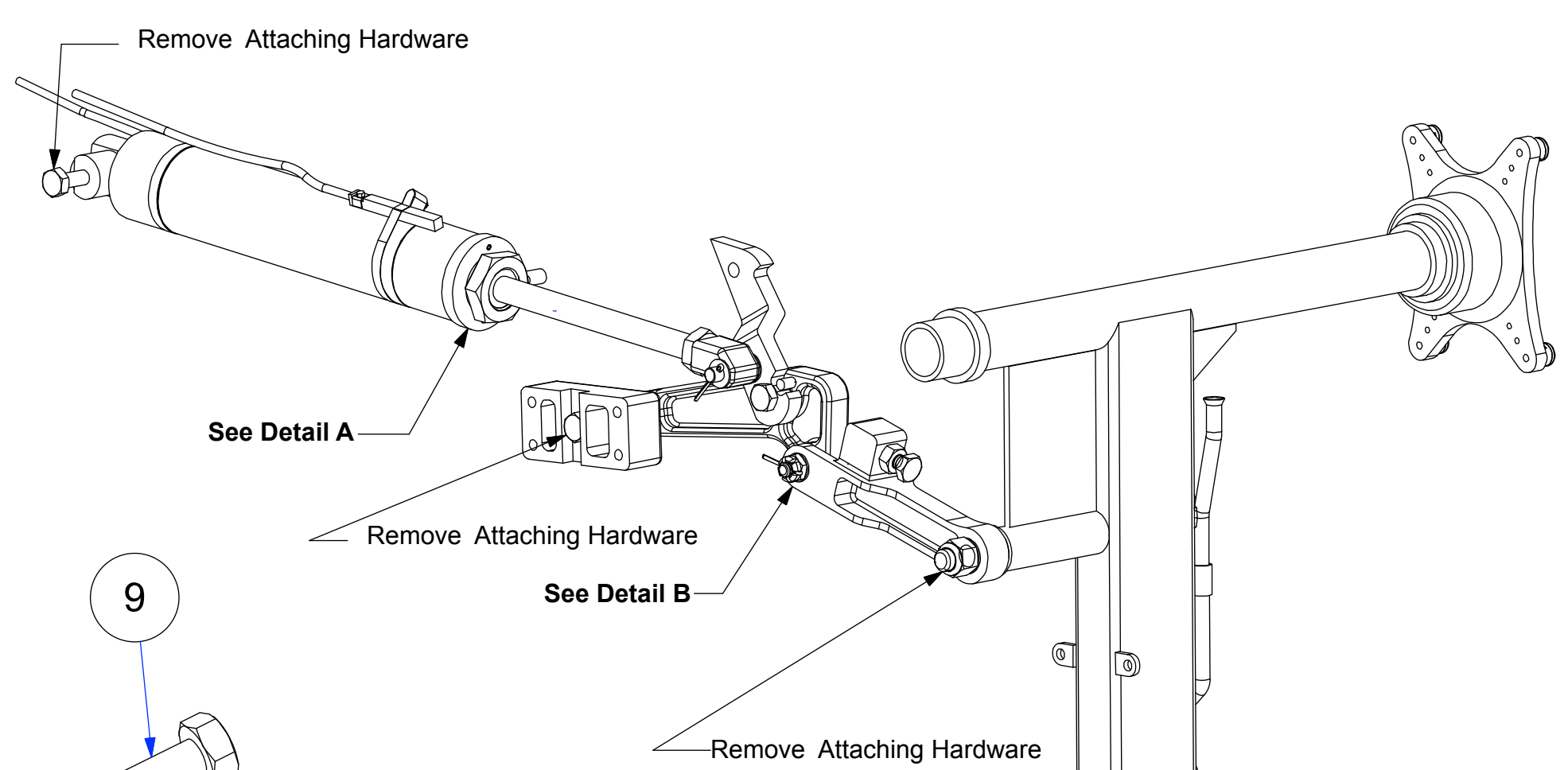
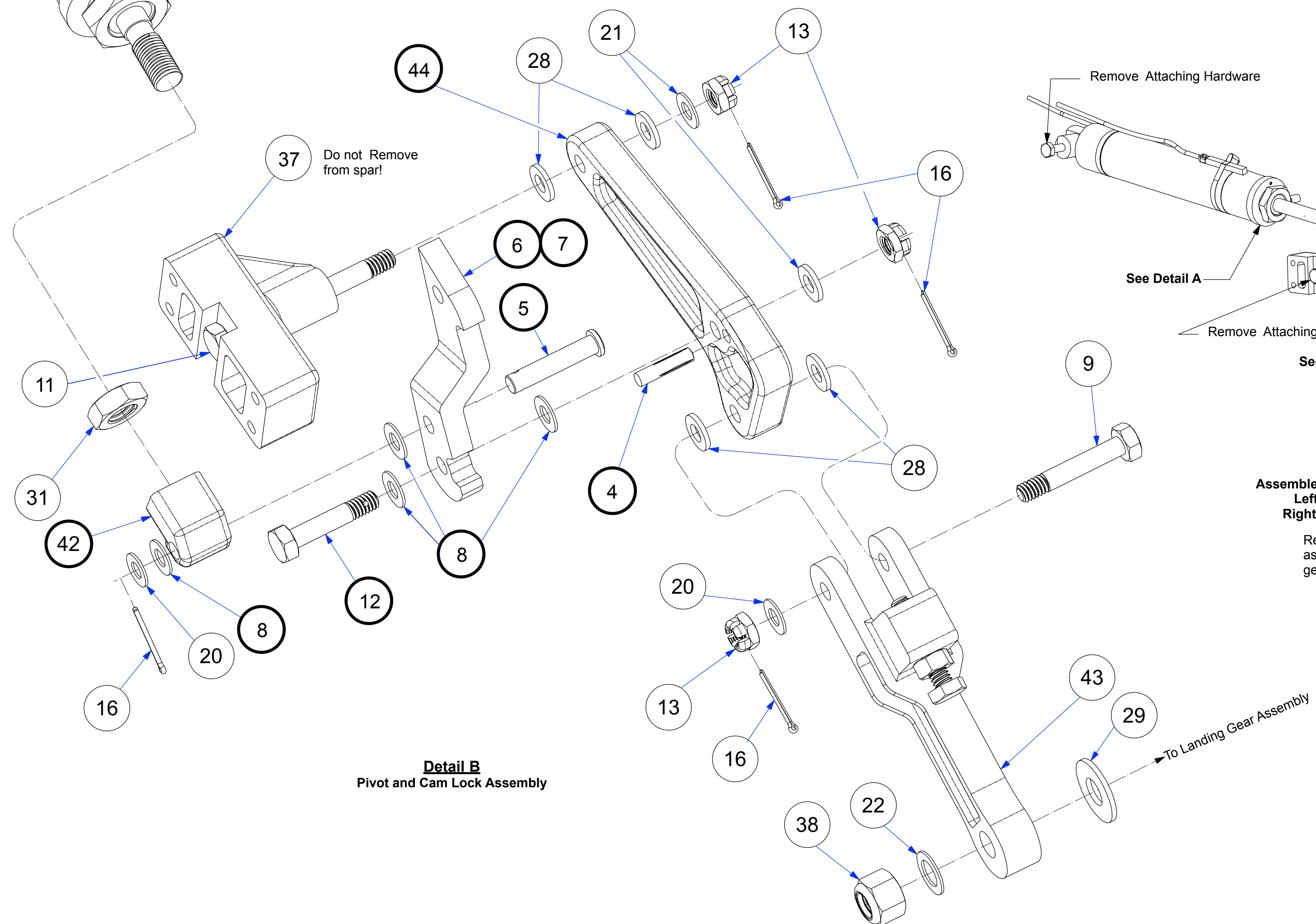
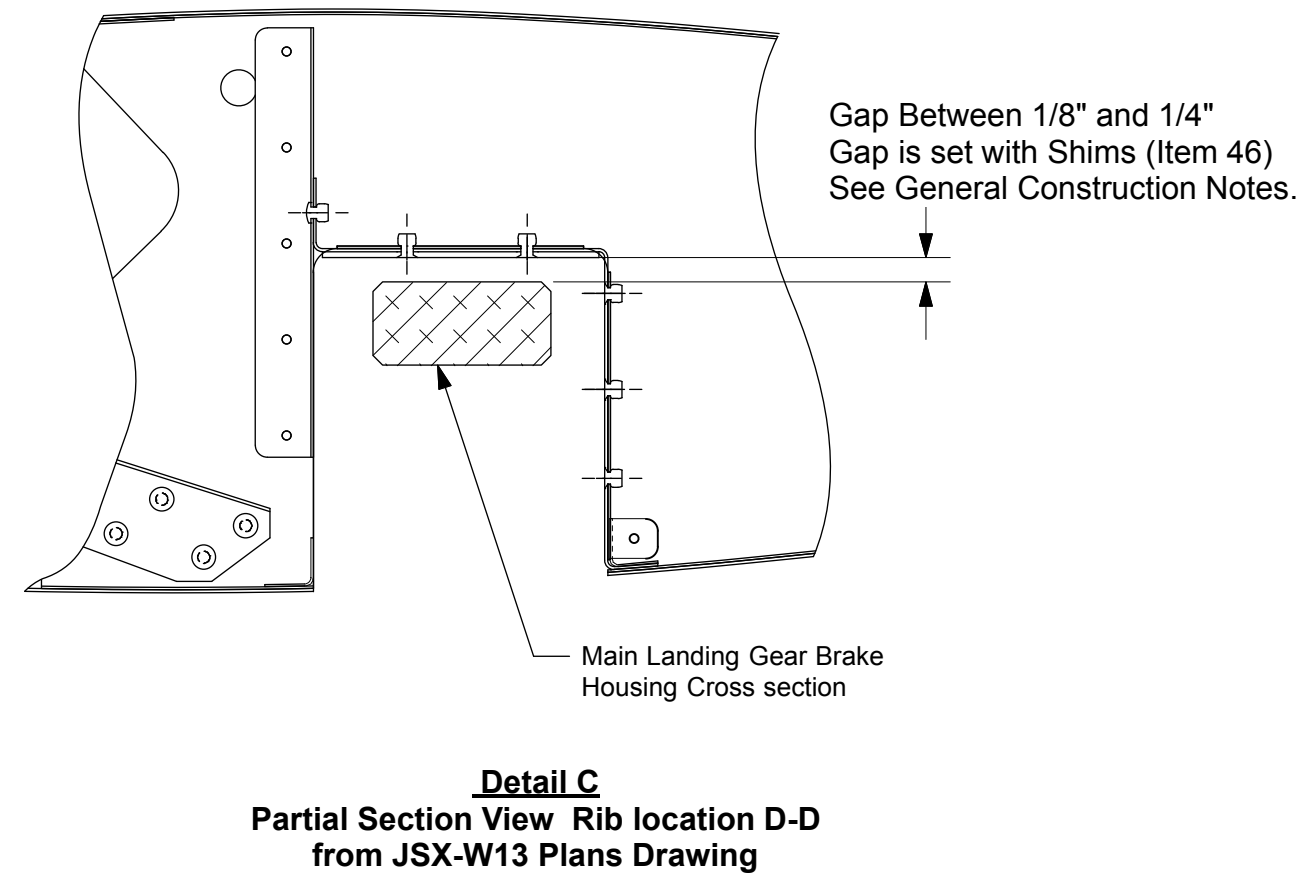
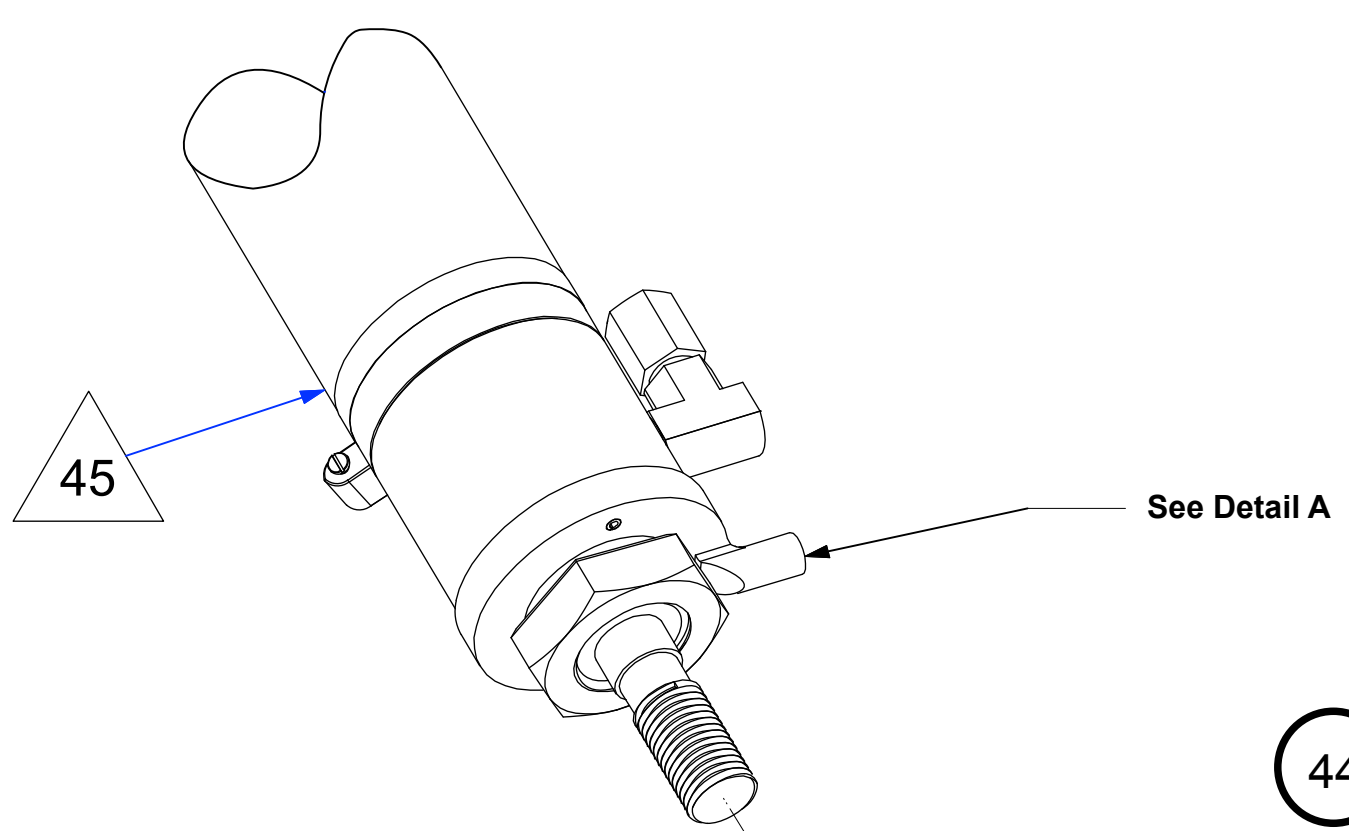
Revision Letter	Change Description	Revision
A	Updated BOM: Removed dimensions from common hardware. Changed Item 5 to AN394-35 Clevis pin, was JSX-L01-67. Changed Item 11 to AN4-24 was AN4-12. Added Item 12 AN4-12.	1.17.2019
B	BOM: Added Item 46 JSX-L01-67 Shims. Added General Construction Notes. Added Detail C Partial Section View Rib Location D-D. Added Gear Uplock Clearance Detail.	6.14.2019



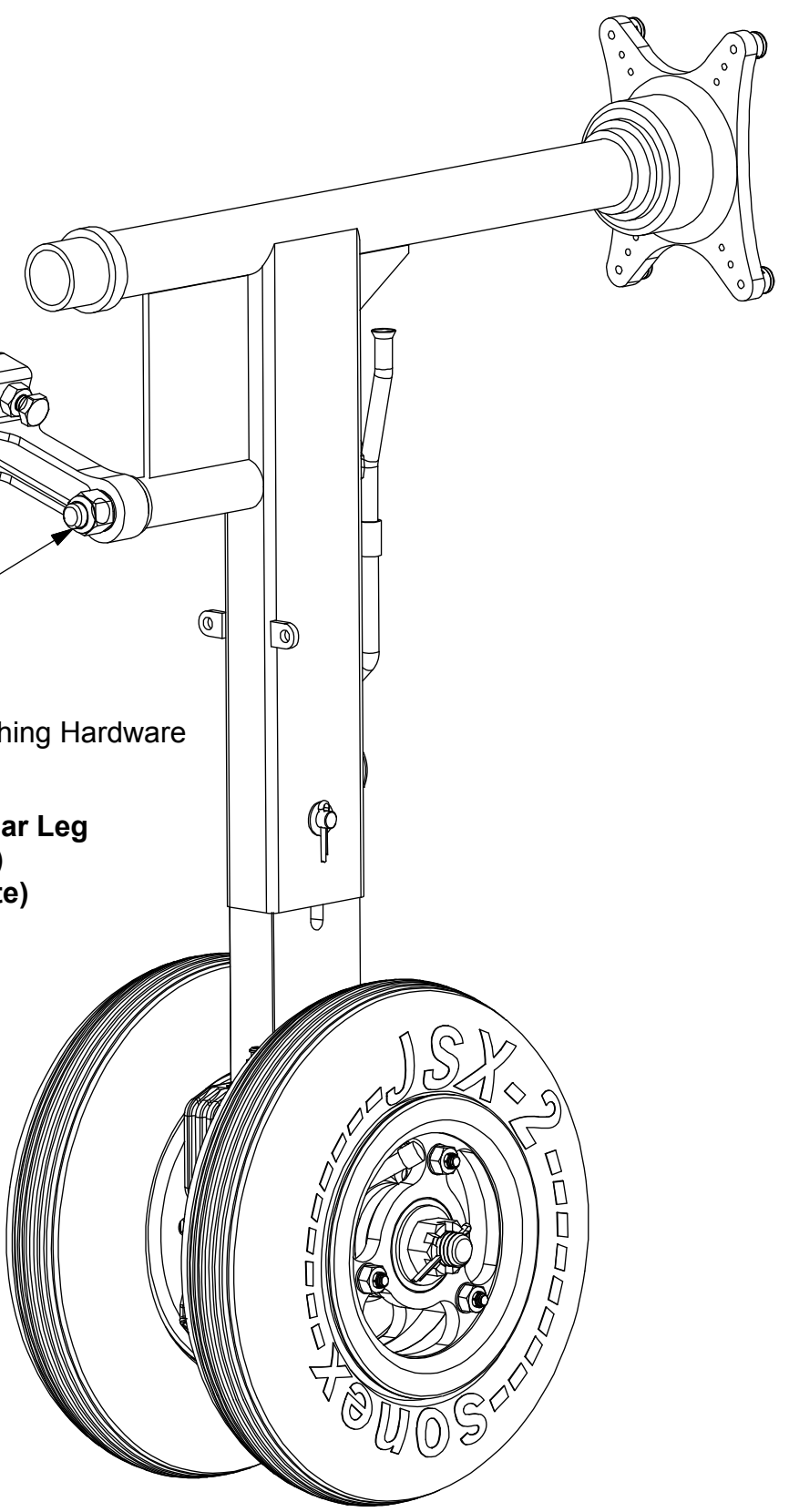
Gear in Unlocked Position



Gear Up Lock Clearance Detail



Detail D
Assembled View of linkage and Gear Leg
Left Hand Assembly (shown)
Right Hand Assembly (opposite)
Remove attaching hardware as indicated for previous gear version.



Sub Sonex
Main Landing Gear Up Lock Upgrade Details

Drawing Scale NONE	Drawing Number JSX-L06	Revision B
-----------------------	---------------------------	---------------